

ELK1 Antibody
Rabbit mAb
Catalog # AP90409

Specification

ELK1 Antibody - Product Information

Application	WB, IHC, ICC, IP
Primary Accession	P19419
Reactivity	Rat
Clonality	Monoclonal

Other Names

ELK1; ETS-domain protein ELK-1; ETS-domain protein Elk-1;

Isotype	Rabbit IgG
Host	Rabbit
Calculated MW	44888 Da

ELK1 Antibody - Additional Information

Dilution	WB~~1:1000 IHC~~1:100~500 ICC~~N/A IP~~N/A
Purification	Affinity-chromatography
Immunogen	A synthesized peptide derived from human ELK1
Description	This gene is a member of the Ets family of transcription factors and of the ternary complex factor (TCF) subfamily. Proteins of the TCF subfamily form a ternary complex by binding to the the serum response factor and the serum reponse element in the promoter of the c-fos proto-oncogene. The protein encoded by this gene is a nuclear target for the ras-raf-MAPK signaling cascade.
Storage Condition and Buffer	Rabbit IgG in phosphate buffered saline , pH 7.4, 150mM NaCl, 0.02% sodium azide and 50% glycerol. Store at +4°C short term. Store at -20°C long term. Avoid freeze / thaw cycle.

ELK1 Antibody - Protein Information

Name ELK1 ([HGNC:3321](#))

Function

Transcription factor that binds to purine-rich DNA sequences (PubMed:10799319, PubMed:10799319)

[7889942](http://www.uniprot.org/citations/7889942)). Forms a ternary complex with SRF and the ETS and SRF motifs of the serum response element (SRE) on the promoter region of immediate early genes such as FOS and IER2 ([1630903](http://www.uniprot.org/citations/1630903)). Induces target gene transcription upon JNK and MAPK- signaling pathways stimulation ([7889942](http://www.uniprot.org/citations/7889942)).

Cellular Location

Nucleus.

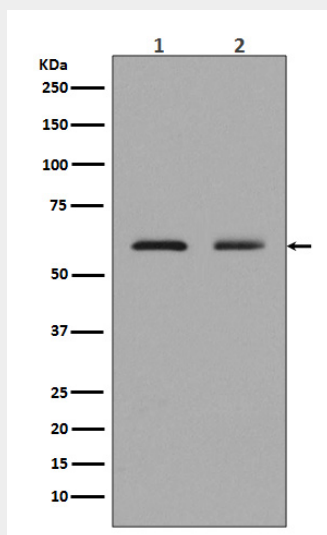
Tissue Location

Lung and testis.

ELK1 Antibody - Protocols

Provided below are standard protocols that you may find useful for product applications.

- [Western Blot](#)
- [Blocking Peptides](#)
- [Dot Blot](#)
- [Immunohistochemistry](#)
- [Immunofluorescence](#)
- [Immunoprecipitation](#)
- [Flow Cytometry](#)
- [Cell Culture](#)

ELK1 Antibody - Images

Western blot analysis of Elk1 expression in (1)Neuro-2a cell lysates; (2)K562 cell lysate.